

We want to THANK YOU, our Customers  
for 35 GREAT SEASON!

We just want to remind you that  
**Services Automatically Renew Each Year.**

Be sure to notify us of any changes. We will start  
your services for you at the appropriate time.

FOLLOW US ON SOCIAL MEDIA

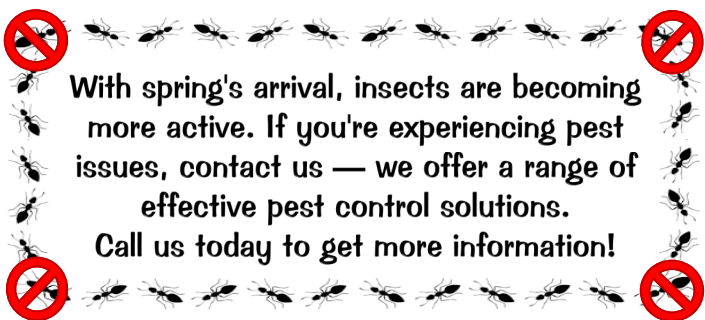
 Facebook: Living Water Lawn & Tree Care

 Instagram: @livingwaterlawncare

REFER A FRIEND

And Get Rewarded

You can refer a friend from your account on  
our website, or be sure to have them  
mention that you referred them.  
We will add a **\$30** credit to your account once  
they sign-up for services!



★★★★★ Review us on


  
Your opinion matters

Your feedback means a lot to us.  
When you have a moment, we'd truly  
appreciate it if you could leave a review.

Commit your work to the Lord & it will succeed - Proverbs 16:3

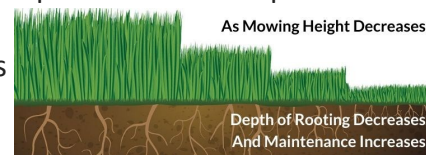


Hello Friends,

I was going to write a very different article—  
but it can wait. Right now, the most important thing  
is watering and mowing. With current watering  
restrictions in place, figuring out *how* and  
*how often* to water is a real challenge.   
Let's be honest—the science behind these  
mandates isn't exactly solid. But for now,  
they're the law, so let's talk about how to make the  
best of the situation.

**First, obey the law.** As a follower of Jesus, I'm  
told to obey the law. In most areas with these  
restrictions, we're allowed to water three days a  
week. But in our region—with its sandy and rocky  
soils—that's not nearly enough to keep cool-season  
grasses healthy, let alone green, through  
summer. If you have a sprinkler system,  
I recommend running your *A* program starting at  
12:05 a.m. on each watering day. Then, at 8 p.m. the  
same day, run your *B* program to water again. These  
are your watering days—use them well. :)

**Next up: mowing.** Mowing can do a lot to  
help your lawn cope with these watering restrictions.  
Mow higher. Back in the '80s and '90s, we tried to  
get people to mow at 2 inches. The Greatest  
Generation survived the Great Depression, won  
World War II, and helped make our country great—  
and as a reward, they kept their lawns scalped short.  
Teaching them that 2  
inches was better was  
real progress. Sadly  
today, most of that  
generation is gone, but thankfully, most people mow  
a little higher now. Around 20 years ago, we at Living  
Water began experimenting with mowing heights of  
2½ to 3 inches. Now, because of current  
watering rules, I mow at 4 inches. And it  
helps. Mowing higher means fewer  
weeds, far less crabgrass and other  
junk grasses, and less insect damage.



Locally Owned  
34  
Years  
Serving You Since 1981

Commit your work to the Lord & it will succeed - Proverbs 16:3

It also makes watering more efficient and effective. Don't worry—after two or three mows, your lawn will still look manicured, lush, and green. You'll be using less water and getting better results!

**Lastly: mulching.** Mulching is another great way to make water go further. Our cool-season grass types here in the Northwest are made up of 90–97% water. By mulching, you're returning moisture—and a little nitrogen—back into the lawn. Here's my suggestion: mow once or twice around the lawn with the bag on. Then remove the bag and mulch the rest.



Handling clippings takes up over 40% of the total mowing time. Don't use side discharge and try to avoid getting clippings in your shrub beds—it's messy, and it causes grass to grow where it shouldn't.

If you use a mowing service, just ask them to make these small changes.



Thanks for reading!  
God's rich blessing on you  
Mike

## OUTDOOR WATERING SCHEDULE

Watering Rules Apply June 1st - October 1st

TUES	WED	THURS	FRI	SAT	SUN
ODD	EVEN	ODD	EVEN	ODD	EVEN
addresses	addresses	addresses	addresses	addresses	addresses

NO WATERING BETWEEN 10:00AM - 6:00PM (HELPS AVOID EVAPORATION AND WATER WASTE)

NEED HELP  
PROGRAMMING  
YOUR SPRINKLER  
CONTROLLER?  
Click here to  
schedule an  
appointment with  
a water efficiency  
specialist today!

### Following an Odd/Even Schedule:

- Promotes root growth, boosting plant resiliency.
- Reduces the demand on our water system.
- Protects the health of the Spokane River during summer drought.



## WHAT OUR CUSTOMERS HAVE TO SAY!

Shout  
out

"You have clearly trained the people who answer the phone very, very well. It's a pleasure and sadly rare to speak to friendly, competent, and helpful people. Your techs are great too."

- Rick, Spokane

"Our tech, Brian, was great!"

- Loree, Spokane

Commit your work to the Lord & it will succeed - Proverbs 16:3

Call 509-487-3439

Email at

[contactus@livingwaterspray.com](mailto:contactus@livingwaterspray.com)

For tips and more information

visit us at

[www.livingwaterlawncare.com](http://www.livingwaterlawncare.com)



### Prepay and Save



Prepay for your services this season and you can receive a 5% discount. You can find out your prepay total by visiting our website or contacting our office.

\*Exclusions apply - Contact office for details\*

**Living Water**  
Lawn & Tree Care

- Lawn Fertilization
- Organic Fertilizer Options
- Tree & Shrub Care
- Shrub Bed Weed Control
- Insect and Disease Management
- General Weed Control
- Noxious Weed Control
- Lawn Aerations
- And More...



**Living Water**  
Pest Control

- Full-Service Pest Control
- Spider Barrier Program
- Premier Pest Program
- Ant Control
- Wasp Nest Removal
- Carpenter Ants & Termites Treatments
- Rodent Control



At **Living Water** we pride ourselves by using the best products available and applying them with care. We want our service to be something that you can count on because you matter to us. We strive to show you that each time we have the opportunity to serve you.

Commit your work to the Lord & it will succeed - Proverbs 16:3